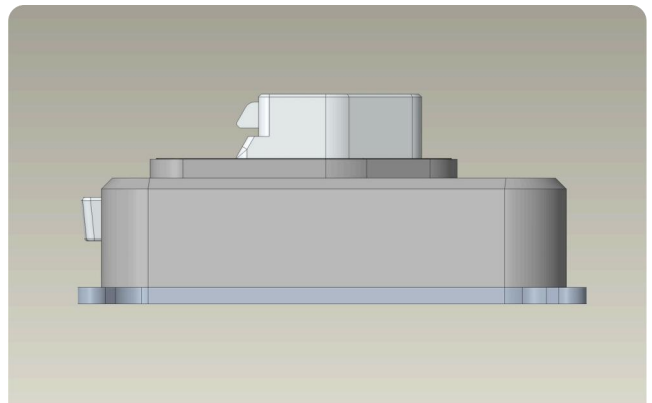
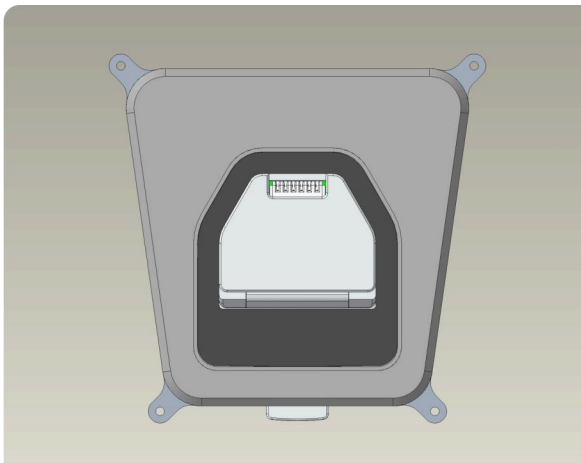
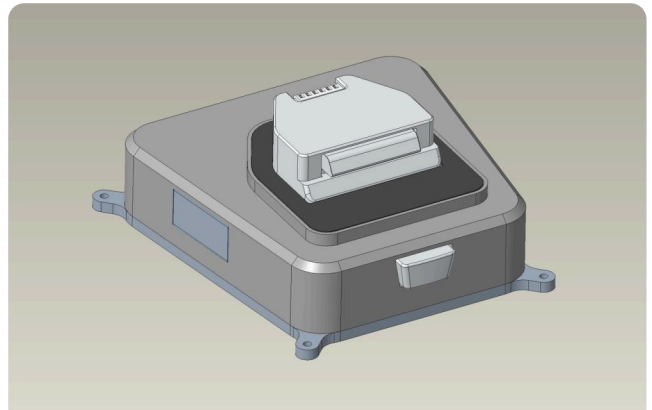
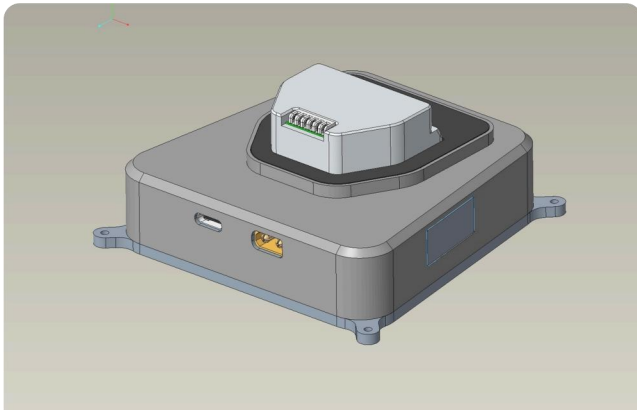


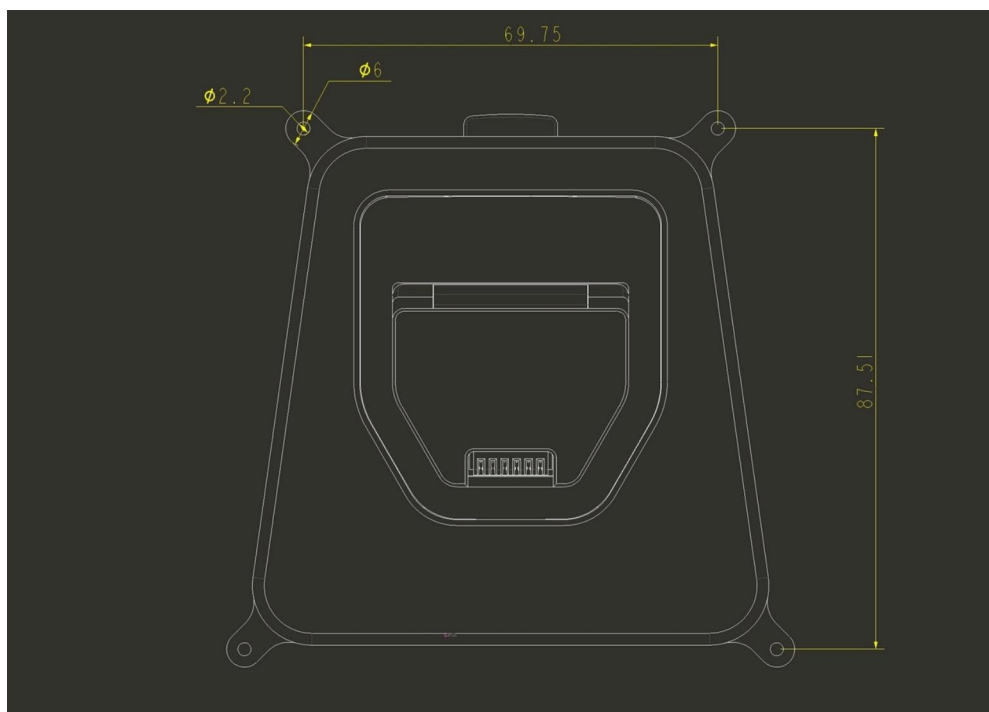
# S20 Adapter Instructions

## Images



## Structure Description

Through hole for screw



## Circuit Description

This device supports dual power input modes:

1. Connect a PD charger to the Type-C port: for 35W+ power delivery, a PD60W charger is recommended.
2. Use a DC adapter with 13.2V-16.8V output: input via XT30 interface.

The device will power on automatically when connected to a power source.

